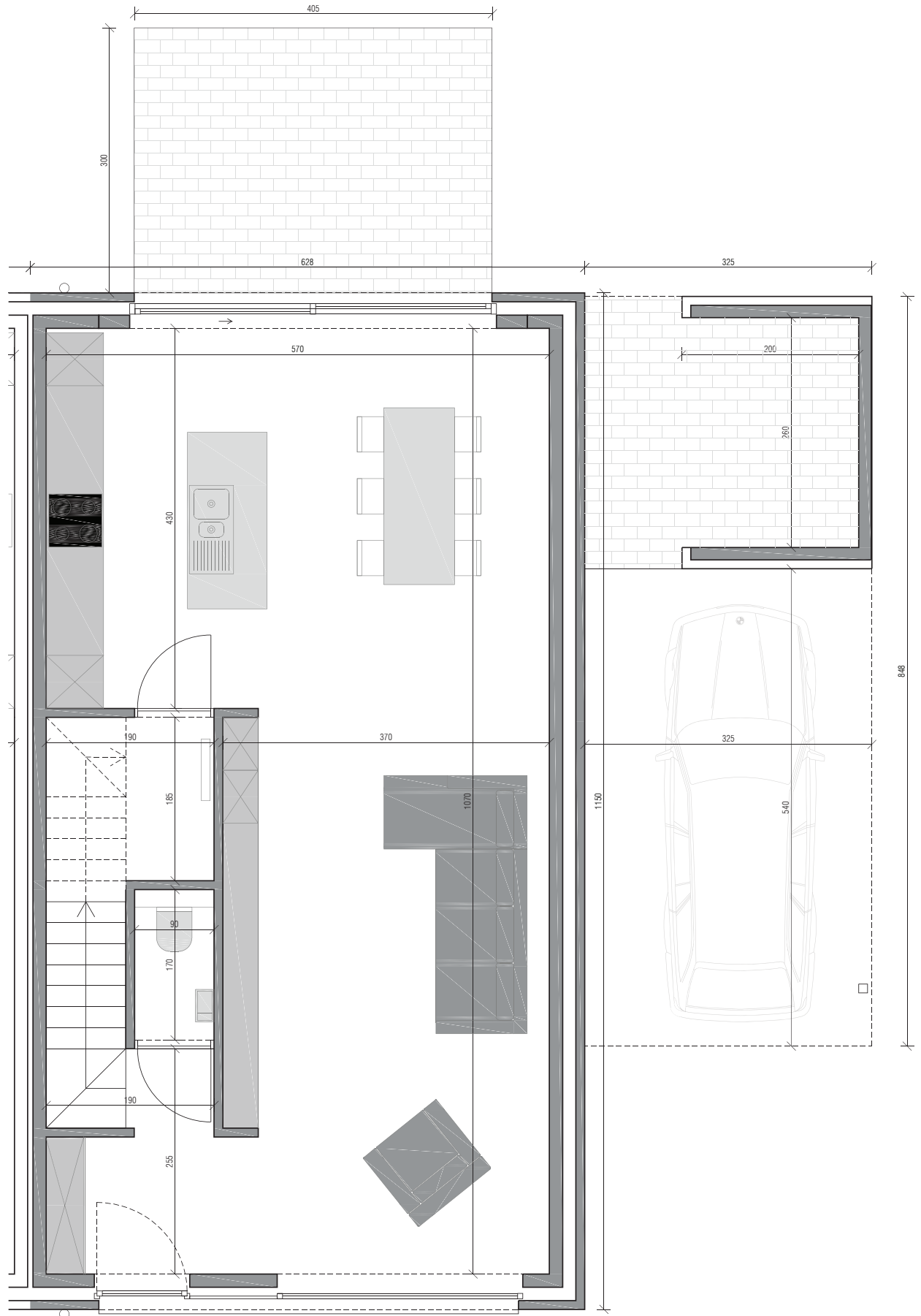
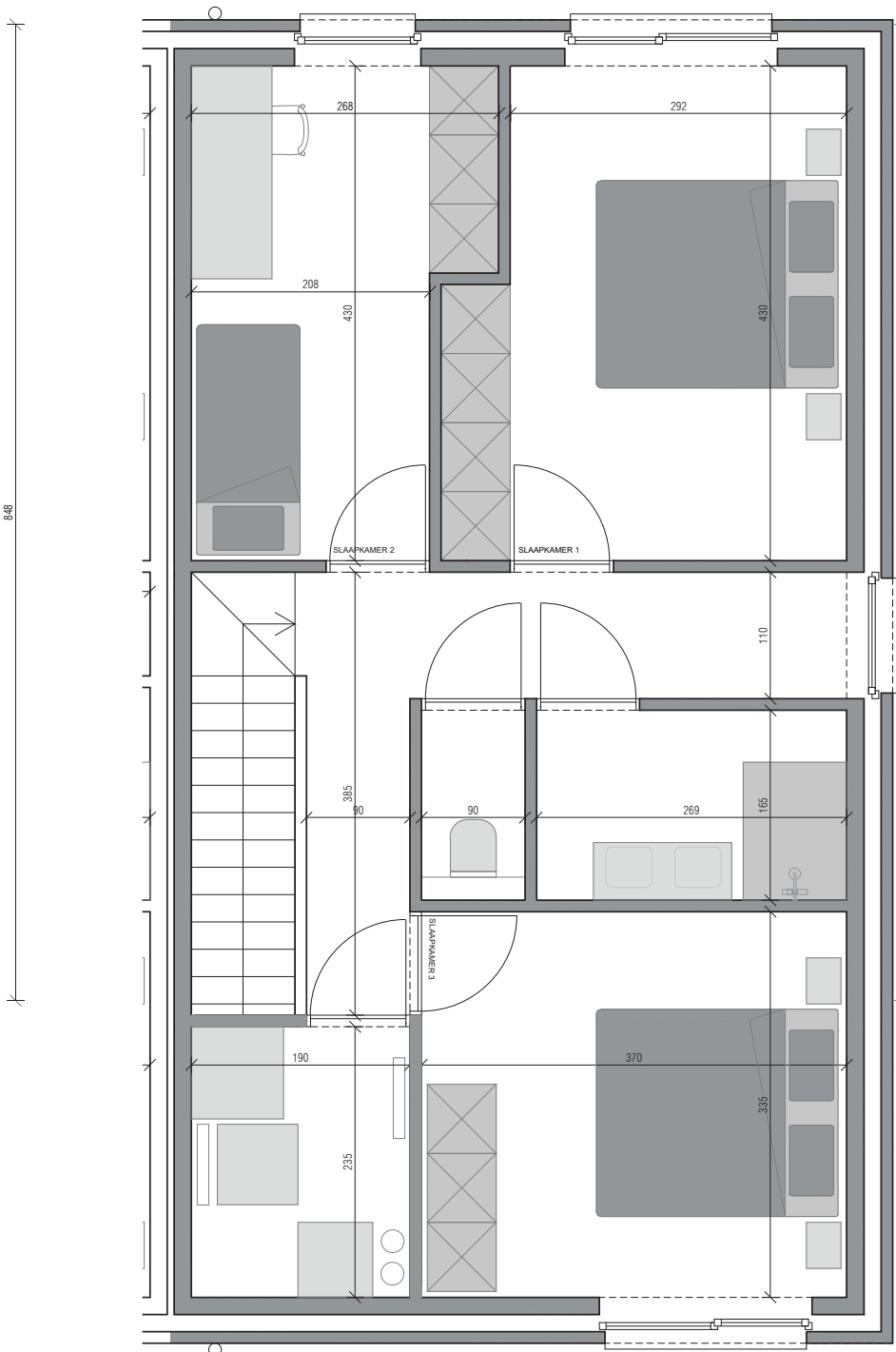
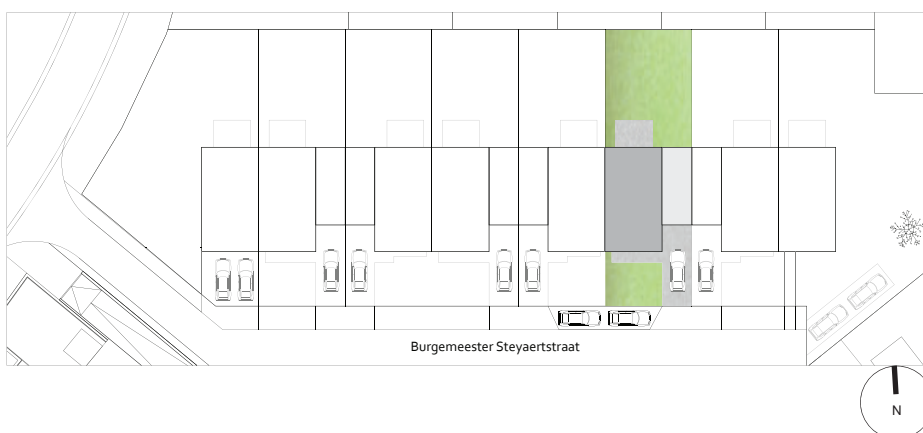


Woning 6





perceel: **291m²**
 verkoopsopp.: **144,44m²**
 tuin + terras: **124,15m²**
 carport + berging: **27,56m²**
 badkamer: **1**
 slaapkamers: **3**
 toilet: **2**
 parking: **op eigen terrein**

verkoopsopp.: buitenkant buitenmuur, helft gemeenschappelijke muren, excl. terras/carport/berging

